

# SURGERY IN THE “NETHER” REGIONS

BY SARAH MACGEORGE





# OVERVIEW



- ◆ Introduction
- ◆ Circumcision
- ◆ Cryptorchidism
- ◆ Hernia
- ◆ Hypospadias
- ◆ Analgesia
- ◆ Post-operative and discharge care
- ◆ Conclusion

# INTRODUCTION

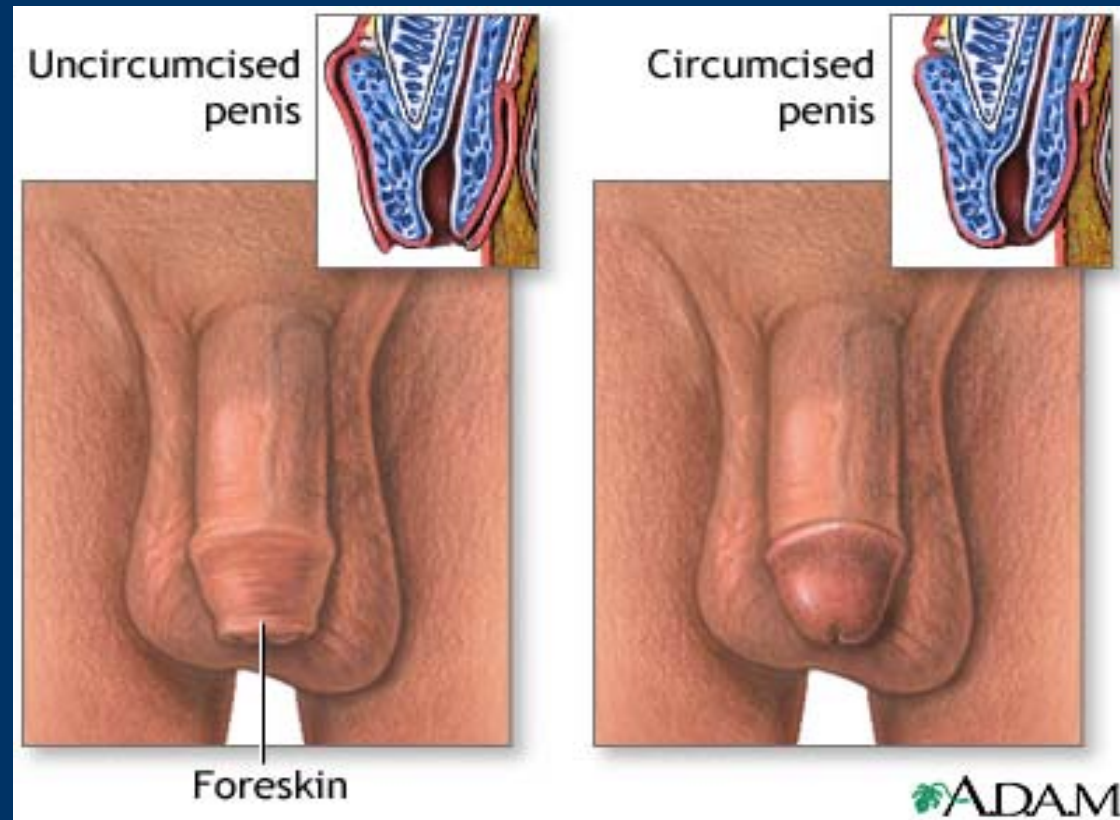
## “DAY SURGERY UNIT”

- ◆ Environment that facilitates a comfortable and safe Day Surgical Visit
- ◆ Operations are common to the Day Surgical Unit
- ◆ AGE GROUPS: Newborns to school age (6-12)
- ◆ Expert paediatric care and effective pain management

# CIRCUMCISION

- ◆ Surgical excision of the prepuce
- ◆ 497 Day Surgical cases between July 2003 and February 2004
- ◆ **REASONS:**
  - Health – Phimosis and Balanitis
  - Religious
  - Social
  - Cosmetic

# CIRCUMCISION



# CRYPTORCHIDISM

- ◆ Failure of the testis to descend into the scrotum
- ◆ ORCHIDOPEXY : Surgical attachment to scrotum to prevent retraction
- ◆ 112 Day Surgical cases between July 2003 and February 2004

# CRYPTORCHIDISM REASONS

- ◆ Gubernaculum
- ◆ Congenital or dysgenetic defect
- ◆ Lack maternal gonadotropins
- ◆ Short spermatic cord
- ◆ Fibrous bands
- ◆ Adhesions
- ◆ Narrowed inguinal canal

# CRYPTORCHIDISM

Before



After



# HERNIA

- ◆ The protrusion of an organ through its body cavity
- ◆ HERNIOTOMY: Surgical procedure to reduce a hernia
- ◆ 467 Day Surgical Cases between July 2003 and February 2004

# HERNIA

- ◆ **THREE MAIN CATEGORIES:**
- ◆ **INGUINAL** – Intestines loop and protrude into the groin region
- ◆ **UMBILICAL** – Abdominal contents protrude into the umbilicus
- ◆ **HIATAL** – Portion of the stomach protrudes through the diaphragm

# HERNIA



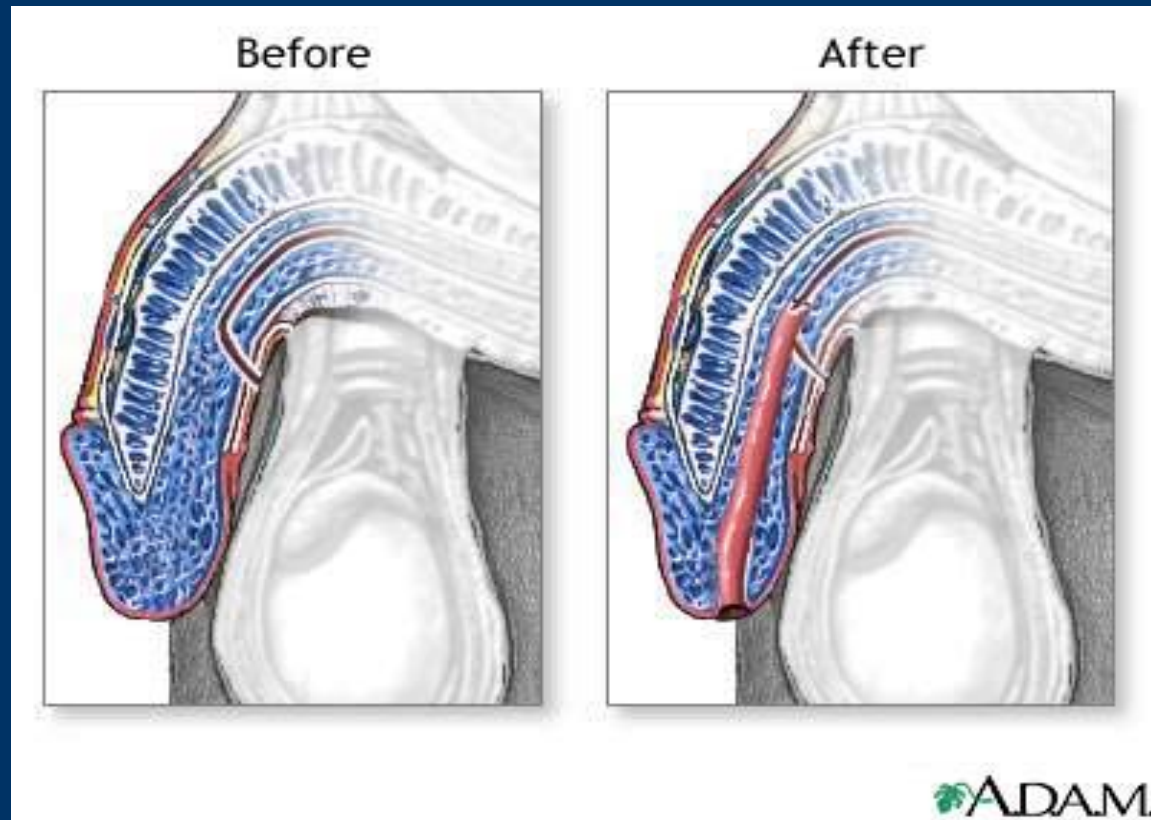
Inguinal hernia

Inguinal hernia occurs when a portion of the small intestine enters the inguinal canal

# HYPOSPADIUS

- ◆ Urinary meatus opens onto the ventral surface of the penis
- ◆ CORRECTIVE SURGICAL INDICATIONS:
  - Reproductive
  - Urological
  - Cosmetic
- ◆ 59 Day Surgical cases between July 2003 and February 2004

# HYPOSPADIUS



# ANALGESIA

- ◆ PRE-OPERATIVELY:
  - Panadol: 30MG/KG +/- Codeine: 0.5-1MG/KG
- ◆ INTRA-OPERATIVELY:
  - CAUDAL :
    - Circumcision
    - Cryptorchidism
    - Hypospadias
  - ILLIOINGUINAL NERVE BLOCK:
    - Hernia

# ANALGESIA

- ◆ POST-OPERATIVELY:
  - Panadol: 15-20MG/KG
    - (Max. 90mg/kg/24hrs)
  - Codeine: 0.5-1 MG/KG
- ◆ VERY RARELY FURTHER ANALGESIA REQUIRED

# POST-OPERATIVE CARE

- ◆ RECOVERY ROOM: 15-30 Minutes
- ◆ CRITERIA FOR WARD TRANSFER:
  - Awake and alert
  - Minimal bleeding - wound
  - Pain adequately controlled
  - Parents present

# DISCHARGE

- ◆ MINIMUM STAY: 30Mins/60Mins (ETT)
- ◆ Tolerating oral fluids/food
- ◆ Nil/minimal bleeding - wound
- ◆ Parents spoken to surgeon
- ◆ Discharge information leaflet
- ◆ Follow-up appointments
  - Usually one-two weeks

# CONCLUSION

- ◆ MOST CASES ONE-TWO HOURS
  - Start of surgery to discharge
- ◆ DAY SURGICAL STAFF FOLLOW-UP
  - 24 Hours post-operatively
    - Rarely reported complications
      - ◆ Refer to surgeon or local GP

# REFERENCES

- ◆ Mosby's Dictionary 4<sup>th</sup> Edition, 1994, Mosby-Year Book
- ◆ Medical-Surgical Nursing 5<sup>th</sup> Edition, Phipps, Cassmeyer, Sands, Lehman, 1995, Mosby-Year Book
- ◆ Pathophysiology 3<sup>rd</sup> Edition, McCanie, Huether, 1998, Mosby-Year Book
- ◆ Dr. Philip Ragg MBBS FANCZA, Consultant Anaesthetist, Royal Children's Hospital
- ◆ Ms. Margaret Costa, Information Technology, Royal Children's Hospital
- ◆ [www.health.allrefer.com/pictures-images.html](http://www.health.allrefer.com/pictures-images.html)
- ◆ FRACP Resources:
  - [www.wch.org.au/intranet/fracp\\_resources?doc\\_id=2241](http://www.wch.org.au/intranet/fracp_resources?doc_id=2241)
  - [www.wch.org.au/intranet/fracp\\_resources?doc\\_id=2247](http://www.wch.org.au/intranet/fracp_resources?doc_id=2247)
  - [www.wch.org.au/nets/handbook/?doc\\_id=660](http://www.wch.org.au/nets/handbook/?doc_id=660)
  - [www.wch.org.au/nets/handbook/?doc\\_id=820](http://www.wch.org.au/nets/handbook/?doc_id=820)
  - [www.wch.org.au/nets/handbook/?doc\\_id=722](http://www.wch.org.au/nets/handbook/?doc_id=722)